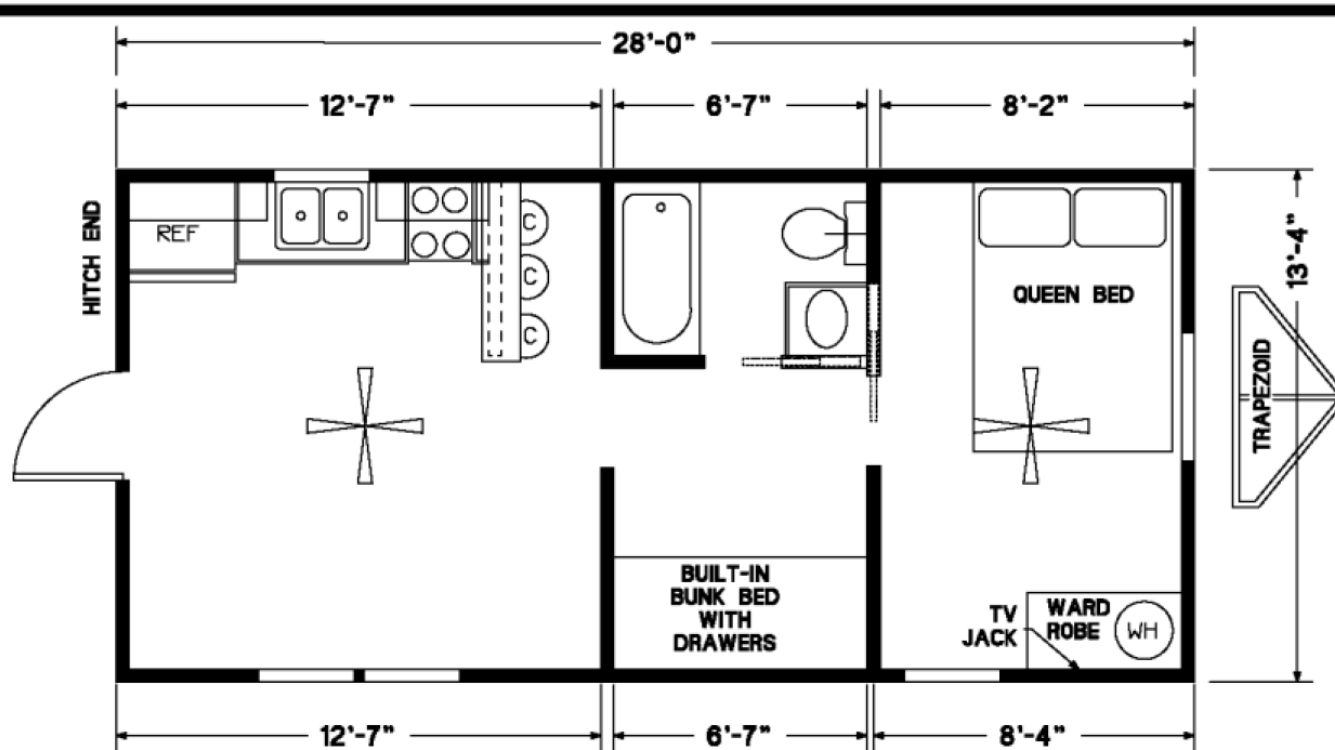


# FLOOR PLAN #WC-R10



- DETACHABLE HITCH
- 10 I-BEAM FRAME W/TANDEM AXLES
- ALL FRAMES HAVE MINIMUM 3 AXLES
- 4-8 IF REQUIRED BY STATE
- 2X6 FLOOR JOIST 16 O.C.
- DOUBLE 2X6 PERIMETER FLOOR JOIST
- 3/4" T&G OSB OR FLOOR DECKING
- VINYL FLOOR IN KITCHEN & BATH
- LAMINATE FLOOR IN LIVING ROOM, BEDROOM
- 2X4 WALLS 16 O.C.
- VAULTED CEILING THROUGHOUT
- 6/12 ROOF PITCH
- FRONT AND REAR OVERHANGS
- CUSTOM BUILT 2X6 RAFTERS
- MOISTURE BARRIER VAPOR WRAP
- DOUBLE STUDS EVERY 4-0"
- DOUBLE 2X6 HEADERS OVER WINDOWS AND DOORS
- TRIPLE STUDS AROUND WINDOWS & DOORS
- THERMO PANE WINDOWS AND DOORS
- CYPRESS LAP OR SMART SIDE SIDING
- ELECTRICAL OUTLETS AND LIGHT FIXTURES
- CUSTOM HAND CRAFTED CEDAR CABINETS
- 2-CEILING FANS
- ROLLED COUNTERTOPS & ROLLED BACKSPLASHES
- FOAM SEAL ON ALL EXTERIOR PLUGS & SWITCHES
- R-13 INSULATION IN WALLS
- R-22 INSULATION IN CEILING & FLOORS
- FOAM SEAL ON EVERY EXTERIOR STUD
- CEDAR BEAMS & INTERIOR TRIM
- REAL CEDAR TRIM
- 1/4" BIRCH PANELING
- 54" TUB & SHOWER COMBO
- SHOWER CURTAIN
- STAINLESS STEEL DOUBLE BOWL SINK IN KITCHEN
- RECESSED LIGHTING IN KITCHEN
- PORCELAIN SINK IN VANITY
- PORCELAIN TOILET
- 20 GAL ELECTRIC WATER HEATER
- FULL SIZE REFRIGERATOR
- 20" RANGE
- 3-BAR STOOLS
- 40K SUBURBAN PROPANE FURNACE
- 1 TON CLOEMAN A/C
- TRAPEZOID WINDOW
- 100 AMP ELECTRICAL SERVICE
- NEC APPROVED ELECTRICAL WIRING
- DELUXE EXTERIOR LIGHTING
- 9-LITE EXTERIOR DOOR
- 7/16" OSB/TECH SHIELD RADIANT BARRIER ON ROOF
- FIRE EXTINGUISHER
- 2" MINI BLINDS
- 2-TV JACKS
- WARDROBE
- 1-SET BUNK BEDS WITH MATTRESS AND DRAWERS
- QUEEN SIZE BED WITH MATTRESS
- COLORED METAL ROOF (29 GAUGE)